



Traffic Tracker Europe

BUSINESS AVIATION TRAFFIC TRACKER EUROPE

July 2012

Departures, Arrivals, Internals and Overflights (DAIO) Report

- Total Flights -

Business Aviation (EU 27)

Month	Arrival			Departure			Internal			Overflight			Previous Year	Current Year	Growth
	Previous Year	Current Year	Growth	Previous Year	Current Year	Growth	Previous Year	Current Year	Growth	Previous Year	Current Year	Growth			
aug-11	7 610	7 813	2,70%	7 735	7 843	1,40%	39 108	40 006	2,30%	1 990	1 972	-0,90%	56 443	57 634	2,10%
sep-11	7 964	8 423	5,80%	7 909	8 364	5,80%	42 355	42 672	0,70%	1 903	2 067	8,60%	60 131	61 526	2,30%
oct-11	7 344	7 300	-0,60%	7 517	7 542	0,30%	39 303	38 018	-3,30%	2 163	1 983	-8,30%	56 327	54 843	-2,60%
nov-11	6 859	6 565	-4,30%	6 864	6 575	-4,20%	35 302	33 921	-3,90%	1 957	1 783	-8,90%	50 982	48 844	-4,20%
dec-11	6 535	6 130	-6,20%	6 703	6 305	-5,90%	30 277	28 885	-4,60%	2 252	1 978	-12,20%	45 767	43 298	-5,40%
jan-12	6 522	6 426	-1,50%	6 357	6 270	-1,40%	29 646	28 374	-4,30%	2 385	2 294	-3,80%	44 910	43 364	-3,40%
feb-12	6 334	6 275	-0,90%	6 353	6 311	-0,70%	31 103	29 936	-3,80%	1 828	1 783	-2,50%	45 618	44 305	-2,90%
mar-12	7 269	7 427	2,20%	7 283	7 489	2,80%	36 341	35 704	-1,80%	1 911	2 054	7,50%	52 804	52 674	-0,20%
apr-12	6 867	6 739	-1,90%	6 866	6 684	-2,70%	35 050	33 157	-5,40%	1 858	1 939	4,40%	50 641	48 519	-4,20%
may-12	8 152	8 000	-1,90%	8 132	7 925	-2,50%	43 583	40 230	-7,70%	2 113	1 910	-9,60%	61 980	58 065	-6,30%
jun-12	8 988	8 904	-0,90%	8 798	8 796	0,00%	45 164	42 957	-4,90%	2 236	2 295	2,60%	65 186	62 952	-3,40%
jul-12	9 126	8 806	-3,50%	9 292	8 884	-4,40%	46 717	44 667	-4,40%	2 095	2 217	5,80%	67 230	64 574	-4,00%
Total	89 570	88 808	-0,90%	89 809	88 988	-0,90%	453 949	438 527	-3,40%	24 691	24 275	-1,70%	658 019	640 598	-2,60%







(States) July 2012 - Average Daily Flights

Business Aviation

STATE	MONTH CURRENT YEAR	MONTH GROWTH	YTD CURRENT YEAR	YTD GROWTH
ECAC	2 265,0	-3,00%	1 912,5	-3,50%
ESRA08	2 248,9	-3,20%	1 898,4	-3,50%
SES	2 167,4	-3,80%	1 833,6	-4,10%
EU27	2 083,0	-4,00%	1 758,0	-4,00%
FAB EC	1 393,5	-3,80%	1 203,2	-3,20%
Blue Med	687,3	-7,30%	439,7	-8,60%
UK-Ireland	469	1,60%	399,3	-2,70%
FAB CE	414,9	-1,80%	338,8	0,10%
SW Portugal - Spain	256,3	-9,00%	196,1	-5,30%
NEFAB	133,4	-38,40%	182,9	-15,80%
Baltic	132,8	-4,10%	128,1	2,30%
DK-SE	121,4	4,20%	122,2	-2,60%

(Airports) July 2012- Average Daily Departures

Business Aviation

RANK	ICAO CODE	NAME	MONTH CURRENT YEAR	MONTH GROWTH	YTD CURRENT YEAR	YTD GROWTH
1	LFPB	PARIS LE BOURGET	74,4	-7,60%	68,4	-6,50%
2	LFMN	NICE	70,4	1,00%	39	1,70%
3	LSGG	GENEVE COINTRIN	51,2	-11,30%	50,3	-5,40%
4 	EGGW	LONDON/LUTON	43,2	13,70%	34,2	-3,20%
5 	LIEO	OLBIA COSTA SMERALDA	34,6	-12,00%	8,8	-16,90%
6 	LIML	MILANO LINATE	32,5	-16,40%	29,9	-10,80%
7	LIRA	ROMA CIAMPINO	31,4	-11,30%	26,7	-15,90%
8 	LSZH	ZURICH	30,2	-2,60%	31,1	-5,90%
9 	LFMD	CANNES MANDELIEU	30	-2,60%	15,8	-3,80%
10 	EGLF	FARNBOROUGH CIV	29	-12,50%	26,3	-7,00%

(Flows) July 2012- Average Daily Flights

Business Aviation

ORIGIN	DESTINATION	MONTH CURRENT YEAR	MONTH GROWTH	YTD CURRENT YEAR	YTD GROWTH
France	France	192,9	1,30%	162,3	-1,40%
UK	UK	123	7,70%	106,7	0,70%
Germany	Germany	123	-12,10%	133	-2,20%
Italy	Italy	103,6	-18,50%	77,9	-18,20%
Spain	Spain	56,9	-2,30%	41,5	-4,00%
Norway	Norway	54,9	3,00%	51,2	-6,40%
Turkey	Turkey	45,2	2,90%	35,9	7,60%
France	UK	40,5	4,80%	30,4	-1,30%
UK	France	38,8	2,10%	29,5	-4,10%
France	Italy	35,4	-5,40%	18,6	-9,00%

Traffic per State in July 2012

- Average Daily Flights - Part 1

Business Aviation

STATE	MONTH CURRENT YEAR	MONTH PREVIOUS YEAR	MONTH CHANGE	MONTH GROWTH	YTD CURRENT YEAR	YTD PREVIOUS YEAR	YTD CHANGE	YTD GROWTH
Libya	5,5	1,2	4,4	377,80%	4,5	2,2	2,3	102,60%
Armenia	3,3	2,7	0,5	20,20%	4,8	5,3	-0,5	-9,10%
Azerbaijan	6,2	6,9	-0,7	-9,90%	6,9	6,3	0,7	10,40%
Georgia	7,1	8	-0,9	-11,60%	9,3	8,6	0,7	8,00%
Tunisia	7,4	8,5	-1,1	-12,90%	6,8	7,5	-0,7	-9,70%
Santa Maria FIR	10,1	11	-1	-8,80%	11,3	11,8	-0,5	-4,30%
Canary Islands	13	14,1	-1,2	-8,20%	14,6	14,3	0,3	2,10%
Malta	16,7	14,3	2,5	17,40%	12,5	11,1	1,4	12,70%
Moldova	18,5	16,4	2,1	13,00%	11,4	10,4	1	9,80%
Iceland	15,2	17	-1,8	-10,40%	12,9	12,7	0,2	1,20%
Egypt	21,5	17,2	4,3	25,20%	17,6	15,2	2,4	15,70%
Estonia	23,3	21,2	2,1	9,70%	21,2	19,5	1,7	8,70%
FYROM	24,5	26,2	-1,7	-6,60%	14,9	14,8	0,1	0,60%
Finland	23,8	26,5	-2,7	-10,30%	28	30,2	-2,1	-7,10%
Latvia	34	31,3	2,7	8,70%	27,6	25,1	2,5	10,10%
Morocco	31,9	34,1	-2,2	-6,50%	32,5	33,3	-0,9	-2,60%
Lithuania	37,4	36,4	1	2,70%	33,7	32,6	1	3,20%
Albania	36	37,5	-1,5	-3,90%	21,3	21,2	0,1	0,60%
Lisbon FIR	36,8	40,1	-3,3	-8,20%	30,1	32,6	-2,5	-7,60%
Cyprus	47,2	51,5	-4,3	-8,40%	42	45,8	-3,8	-8,20%

Traffic per State in July 2012

- Average Daily Flights - Part 2

Business Aviation

STATE	MONTH CURRENT YEAR	MONTH PREVIOUS YEAR	MONTH CHANGE	MONTH GROWTH	YTD CURRENT YEAR	YTD PREVIOUS YEAR	YTD CHANGE	YTD GROWTH
Romania	62,5	58,5	4,1	6,90%	47,4	48,1	-0,7	-1,50%
Bosnia-Herzegovina	53,3	59,2	-5,9	-10,00%	34,5	36,3	-1,8	-4,90%
Belarus	4,6	59,7	-55	-92,20%	46,9	53,5	-6,7	-12,50%
Denmark	62	60,9	1,1	1,80%	63,5	63,8	-0,3	-0,40%
Bulgaria	59	62,1	-3,2	-5,10%	49,1	48,2	0,9	1,90%
Slovakia	69,5	64,4	5,1	7,90%	58,3	57,9	0,4	0,70%
Hungary	78,4	75,4	3,1	4,10%	60,7	60,3	0,4	0,70%
Norway	78,8	78,8	0	0,00%	74,8	78,8	-4	-5,10%
Ireland	80,8	80,7	0	0,00%	71,5	76,1	-4,6	-6,10%
Sweden	90,2	86,1	4,1	4,80%	92,1	94	-1,9	-2,00%
Slovenia	85	86,8	-1,9	-2,20%	55,3	55,1	0,2	0,40%
Danube	94,5	94,1	0,4	0,40%	75,3	75,2	0,2	0,20%
Serbia&Montenegro	90,7	102,4	-12	-11,50%	63,9	65,7	-1,8	-2,70%
Ukraine	125,9	104,4	21,5	20,60%	93,2	81,9	11,2	13,70%
Czech Republic	106,3	114,9	-8,6	-7,50%	104,6	103,2	1,4	1,40%
DK-SE	121,4	116,5	4,9	4,20%	122,2	125,4	-3,2	-2,60%
Poland	119,4	126	-6,6	-5,20%	115,9	114,2	1,7	1,40%
Netherlands	121,3	132,8	-12	-8,60%	126,7	133,3	-6,6	-4,90%
Turkey	131,1	135,6	-4,6	-3,40%	109	106	2,9	2,70%
Baltic	132,8	138,5	-5,6	-4,10%	128,1	125,1	2,9	2,30%

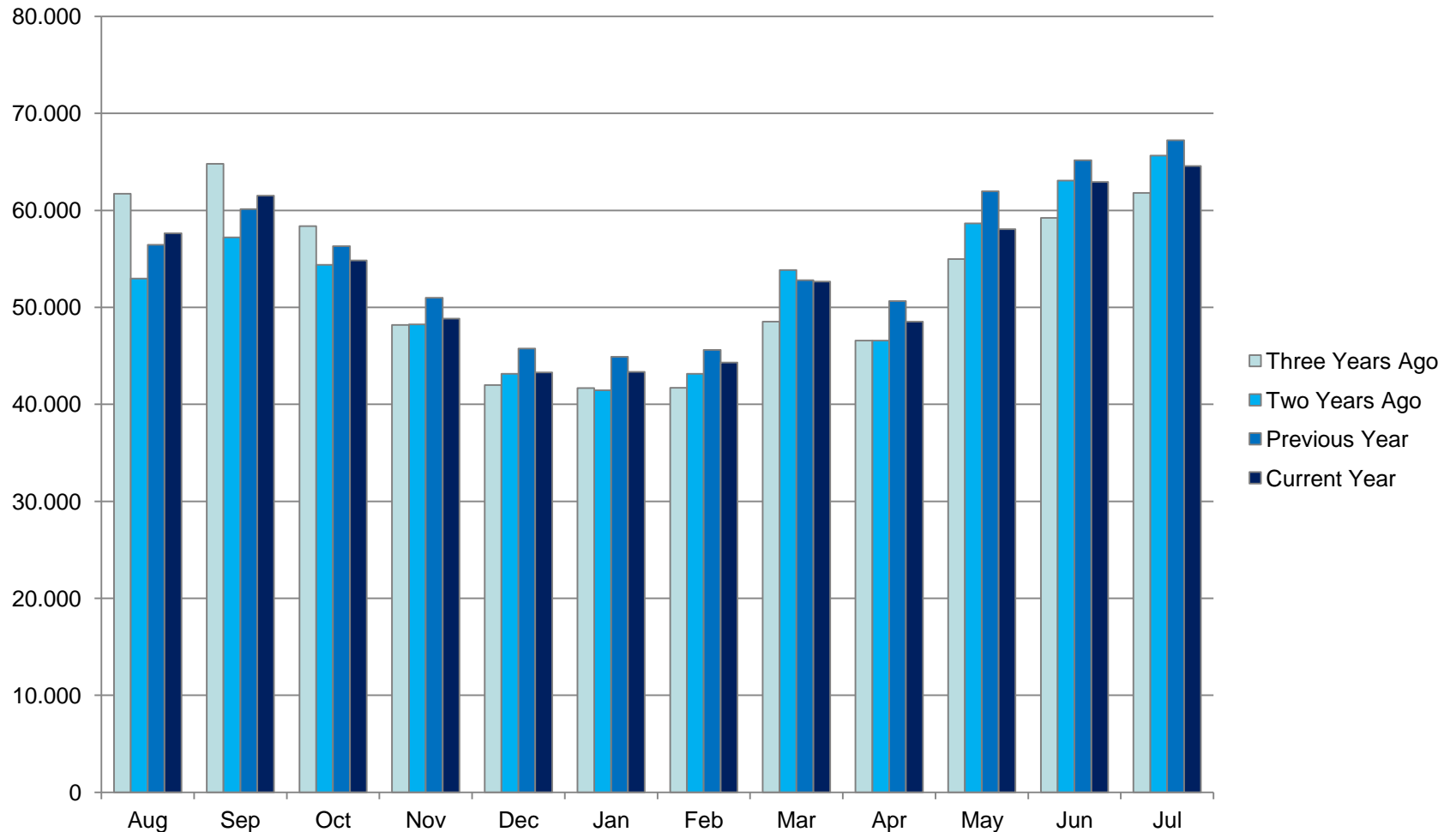
Traffic per State in July 2012

- Average Daily Flights - Part 3

Business Aviation

STATE	MONTH CURRENT YEAR	MONTH PREVIOUS YEAR	MONTH CHANGE	MONTH GROWTH	YTD CURRENT YEAR	YTD PREVIOUS YEAR	YTD CHANGE	YTD GROWTH
Croatia	134,6	139,9	-5,3	-3,80%	76	77,6	-1,6	-2,10%
Greece	136,5	150,9	-14	-9,50%	76,8	85	-8,2	-9,70%
Belgium/Luxembourg	176,3	180,5	-4,2	-2,30%	172,6	174,6	-2	-1,10%
NEFAB	133,4	216,6	-83	-38,40%	182,9	217,2	-34	-15,80%
Spain	250,7	265,3	-15	-5,50%	183,8	190,3	-6,5	-3,40%
Austria	269,7	266,8	3	1,10%	228,1	224,6	3,5	1,60%
SW Portugal - Spain	256,3	281,6	-25	-9,00%	196,1	207	-11	-5,30%
Switzerland	348,5	370,9	-23	-6,10%	329,1	349,1	-20	-5,70%
FAB CE	414,9	422,5	-7,5	-1,80%	338,8	338,5	0,3	0,10%
UK	461,3	452,2	9,2	2,00%	391,8	402,1	-10	-2,60%
UK-Ireland	469	461,5	7,5	1,60%	399,3	410,5	-11	-2,70%
Germany	543	572,6	-30	-5,20%	546,7	557,7	-11	-2,00%
Italy	592	637,3	-45	-7,10%	376,8	413,9	-37	-9,00%
Blue Med	687,3	741,4	-54	-7,30%	439,7	481,3	-42	-8,60%
France	916,3	936,6	-20	-2,20%	706,6	733,1	-27	-3,60%
FAB EC	1 393,5	1 448,8	-55	-3,80%	1 203,2	1 243,0	-40	-3,20%
EU27	2 083,0	2 168,7	-86	-4,00%	1 758,0	1 831,9	-74	-4,00%
SES	2 167,4	2 253,3	-86	-3,80%	1 833,6	1 912,0	-78	-4,10%
ESRA02	2 187,4	2 269,7	-82	-3,60%	1 847,8	1 925,6	-78	-4,00%
ESRA08	2 248,9	2 322,2	-73	-3,20%	1 898,4	1 967,8	-69	-3,50%

Departures, Arrivals, Internals and Overflights (DAIO) Report Business Aviation





This report is provided solely to EBAA Members for information purposes only and no representation, warranties or other assurances, express or implied, are given as to the quality, accuracy, or completeness of the information contained in, or provided in connection with the report.

Recipients of this report must determine for themselves whether any matters referred to are suitable for their purposes.

Neither EBAA nor any of their affiliates, agents, partners, representatives, consultants or any other company, firm or organisation involved in producing this report, nor any of their successors or assign or any employees, officer or director of any of them shall have any liability with respect to the use or reliance on the report by any person, irrespective of any negligence, omission or default, on the part of the foregoing persons.

Any reproduction or publication of this report, in whole or in part, is strictly forbidden without the written consent of the EBAA